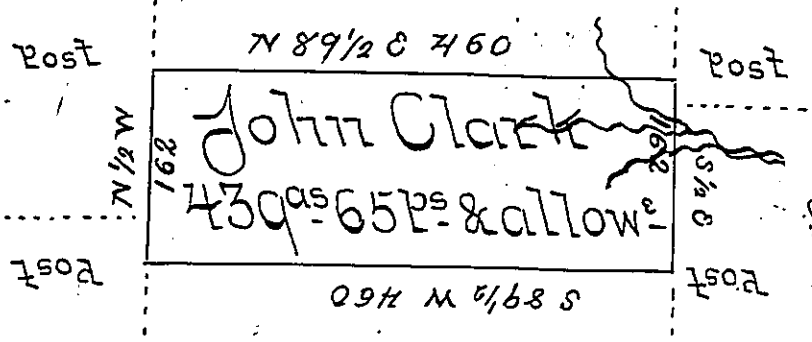


Geo. Treester
Geo. Treester
Geo. Treester

James Pentland
C-160-250

Jeremiah Neel
C-226-216



Sam. Neel
C-217-163

Wm. The Pharl

A Draught of a tract of land called _____ Situate
 in the County of Luzerne, adjoining James
 Pentland & others, surveyed the 6th day of October
 1791 for John Clark in pursuance of a Warrant
 bearing date the 4th day of October 1790. Containing
 Four hundred thirty nine Acres & Sixty five perch^s & the
 allowance of six Perc^t Cent by W^m Gray D.S.

To Don't Broadhead Esq^r }
 Surveyor General }

IN TESTIMONY that the above is a copy of the original remaining on file in
 the Department of Internal Affairs of Pennsylvania, made
 conformably to an Act of Assembly approved the 16th day of
 February, 1833, I have hereunto set my Hand and caused
 the Seal of said Department to be affixed at Harrisburg,
 this eleventh day of August 1904.

George P. Rosen
 Secretary of Internal Affairs.